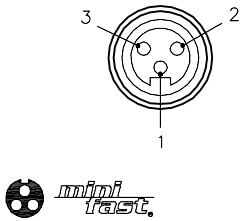
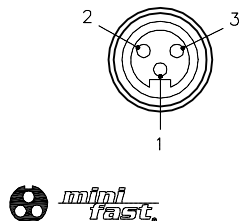
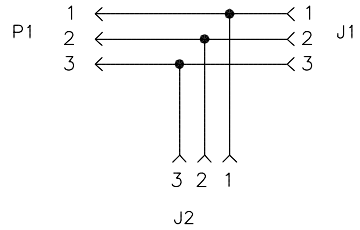
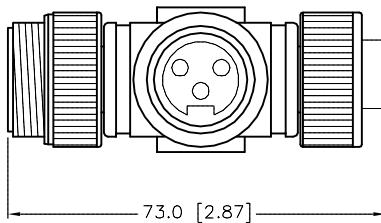
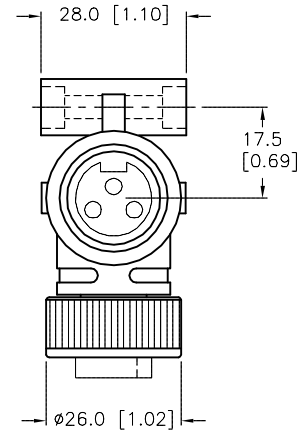
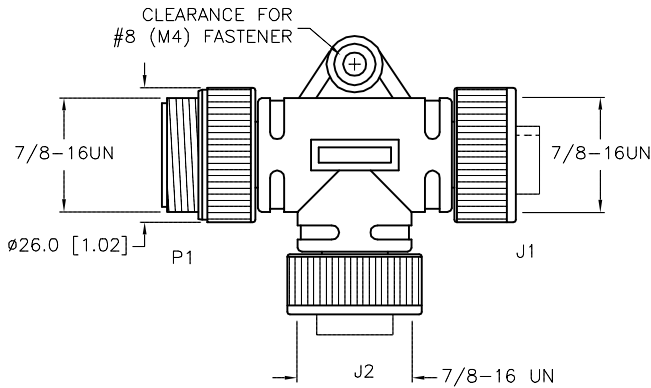
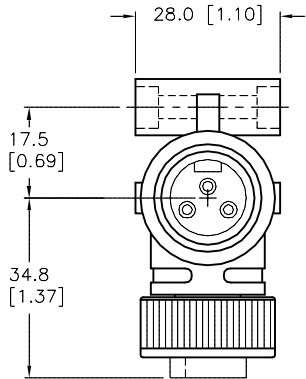
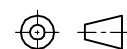


MALE END VIEW	FEMALE END VIEW	WIRING DIAGRAM	SPECIFICATIONS	
			CONTACT CARRIER MATERIAL	TPU
			MOLDED HEAD MATERIAL/COLOR	TPU/YELLOW
			CONTACT MATERIAL/PLATING	BRASS/GOLD
			COUPLING NUT MATERIAL/PLATING	BRASS/NICKEL
			RATED CURRENT [A]	9.0 A
			RATED VOLTAGE [V]	250 V
			CONDUCTOR INSULATION MATERIAL	PVC
			NUMBER OF CONDUCTORS [AWG]	3x16 AWG
			TEMPERATURE RATING	-40°C TO +105°C (-40°F TO +221°F)
			PROTECTION CLASS	MEETS NEMA 1,3,4,6P AND IEC IP67



SOURCE DRAWING - FOR REFERENCE ONLY

NOTES:
1. "/S1658" DESIGNATES 16 AWG CONDUCTORS.

<div>NOTES:</div> <div>1. "/S1658" DESIGNATES 16 AWG CONDUCTORS.</div>					RELATED DOCUMENTS	3RD ANGLE PROJECTION	<div>THIS DRAWING IS CONFIDENTIAL AND THE PROPERTY OF TURCK INC. USE OF THIS DOCUMENT WITHOUT WRITTEN PERMISSION IS PROHIBITED.</div>	<div><div>TURCK INC</div><div>High Technology Sensors and Automation Controls</div></div>	<div>3000 CAMPUS DRIVE MINNEAPOLIS, MN 55441 1-800-544-7769 (763) 553-7300 (763) 553-0708 fax turck.com</div>				
					1.								
					2.	MATERIAL	ALL DIMENSIONS DISPLAYED ON THIS DRAWING ARE FOR REFERENCE ONLY	DRFT	RDS	DATE	02/04/08	DESCRIPTION	
					3.			APVD	T.S.	SCALE	1 = 1.5		
4.	FINISH	CONTACT TURCK FOR MORE INFORMATION	UNIT OF MEASUREMENT			IDENTIFICATION NO.			REV				
B	DRAWING PROCESSED AS PART OF ECO 33971		CBM	04/07/11	33971								
REV	DESCRIPTION		BY	DATE	ECO NO.								
							DO NOT SCALE THIS DRAWING	FILE: U0935-66		SHEET 1 OF 1			